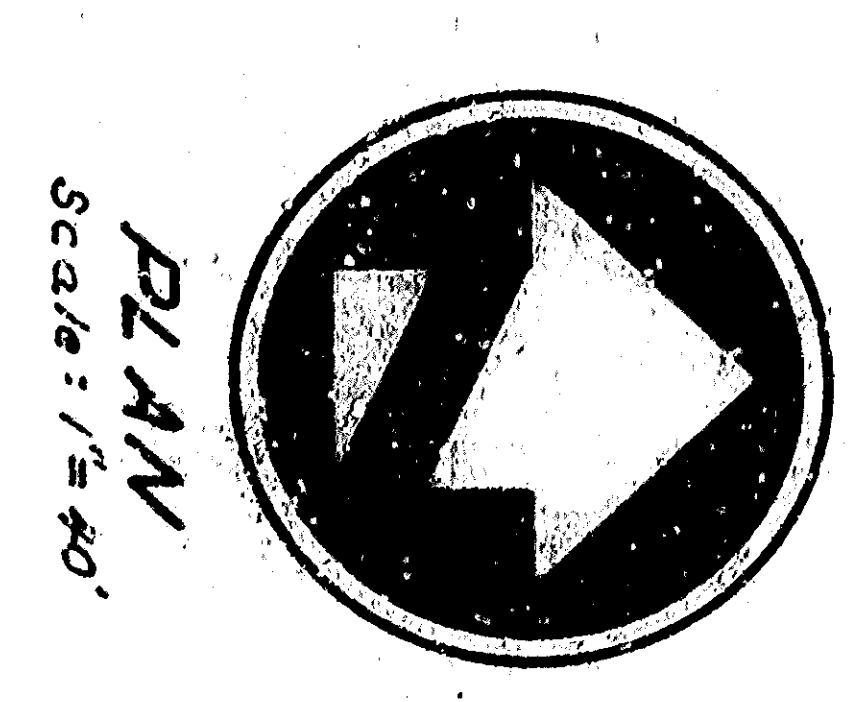
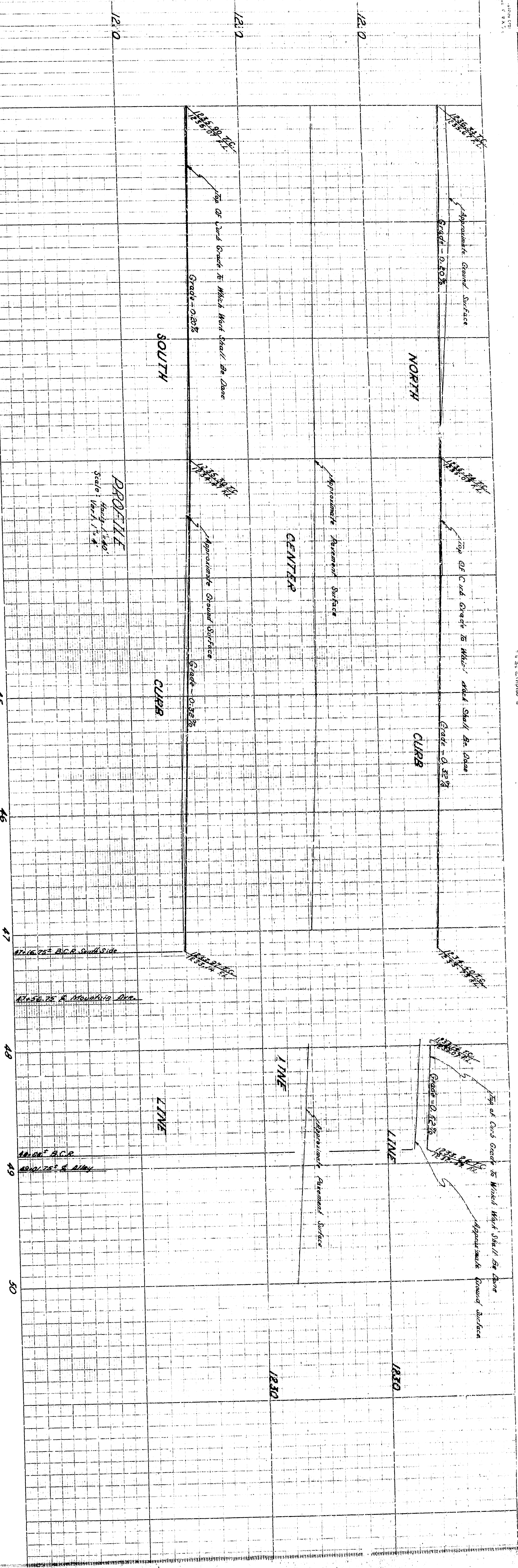


TYPICAL X-SECTION CURB & GUTTER  
 STA. 33+00 TO STA. 47+75  
 Scale: 1" = 1'

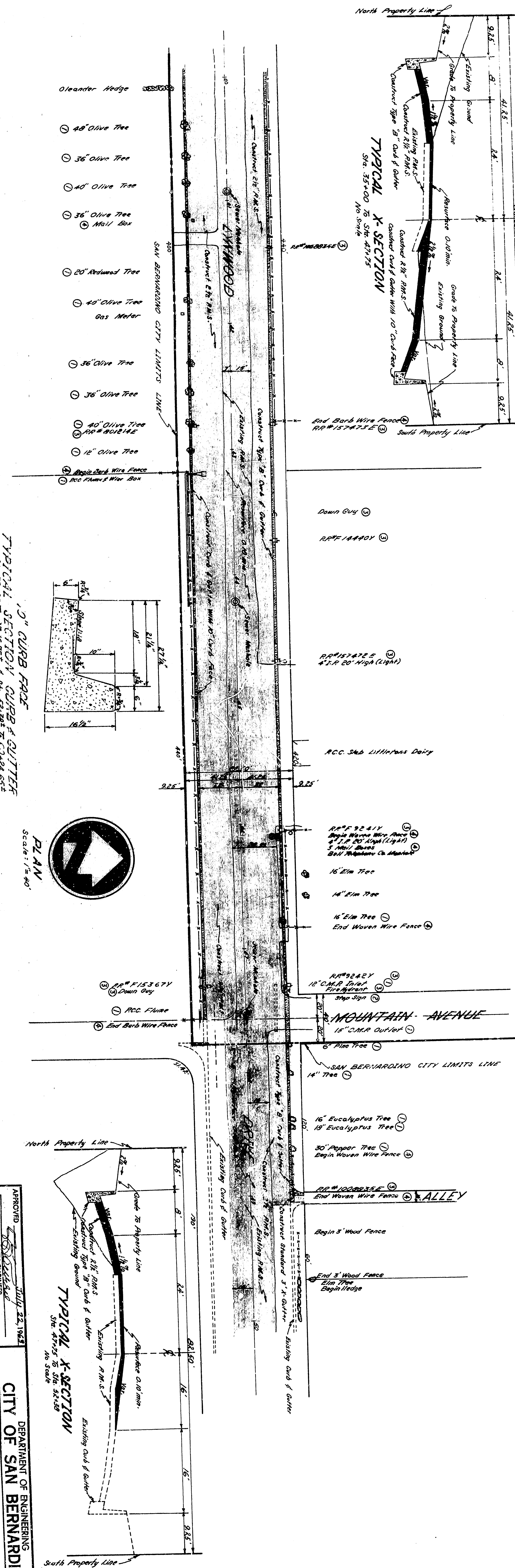
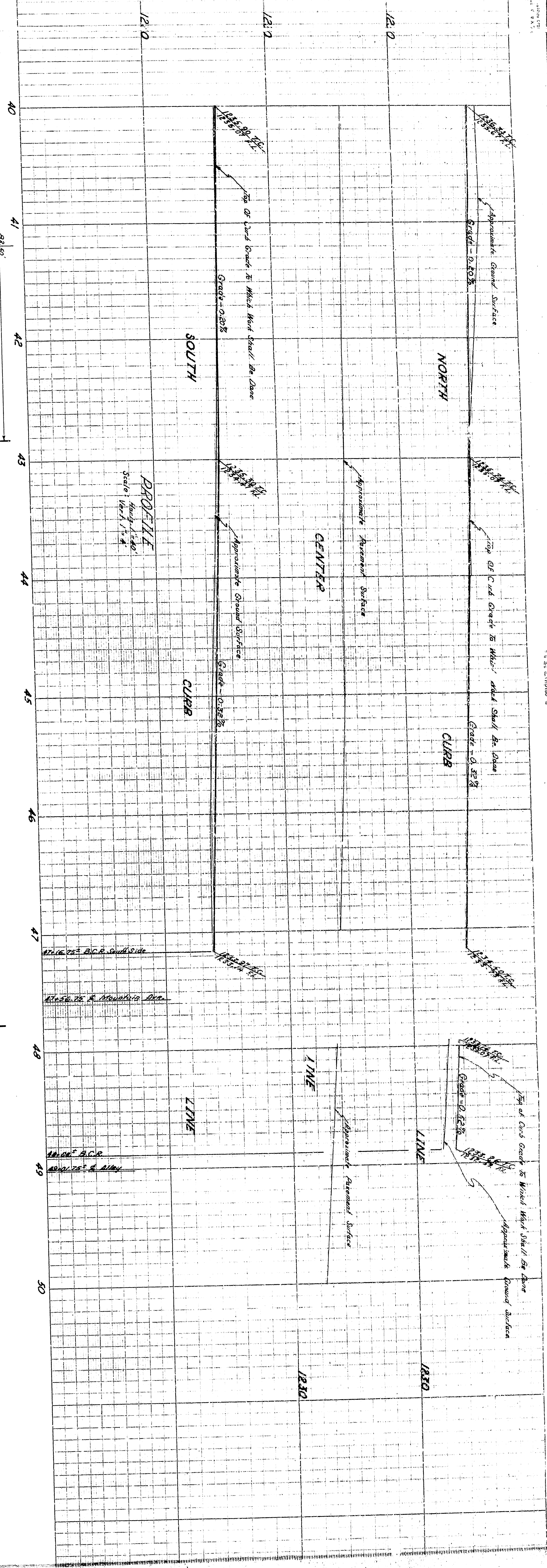


APPROVED	JULY 22, 1944	CITY ENGINEER
REGISTERED CIVIL ENGINEER NO. 1850		
DRAWING NO.	2800	CHECKED BY DEAN
SHEET 5 OF 9 SHEETS		
DEPARTMENT OF ENGINEERING CITY OF SAN BERNARDINO LYNNWOOD DRIVE VALENCIA AVENUE TO DEL ROSA AVENUE		



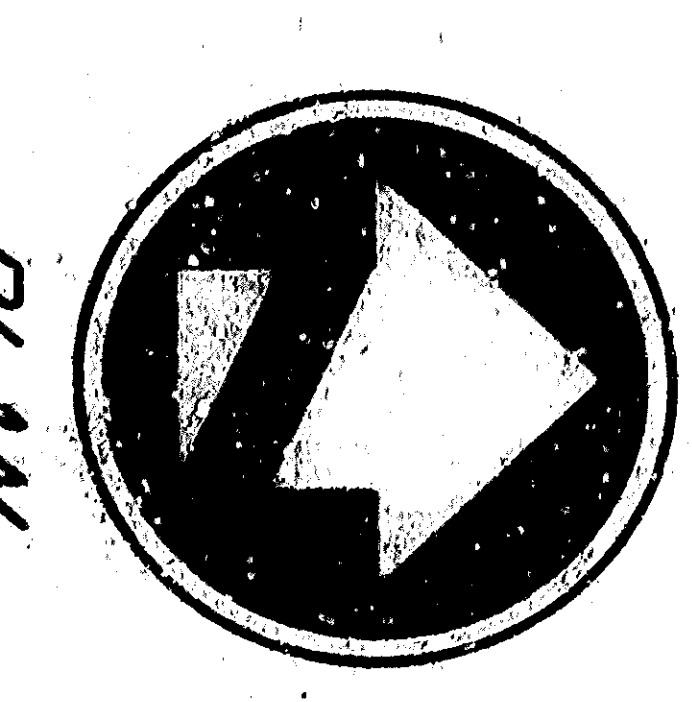
PROFILE  
 Scale: 1" = 40'

Copyright 1944 by the City of San Bernardino, California. All rights reserved.



DEPARTMENT OF ENGINEERING  
 CITY OF SAN BERNARDINO  
 CLUB, GUTTER & GUTTER  
 LYNNWOOD DRIVE  
 VALENCIA AVENUE TO DEL ROSA AVENUE

APPROVED	JULY 22, 1944
REGISTERED CIVIL ENGINEER NO. 1850	
DRAWING NO. DRAWN BY	MAHON
2800	
CHECKED BY	DEAN
SHEET 5 OF 9	RECOMMENDED



TYPICAL SECTION CURB & GUTTER  
 STA. 33+00 TO 37+00 & STA. 37+00 TO 38+00  
 Scale: 1" = 1'

TYPICAL X-SECTION  
 STA. 37+00 TO 38+00  
 1/8" Scale